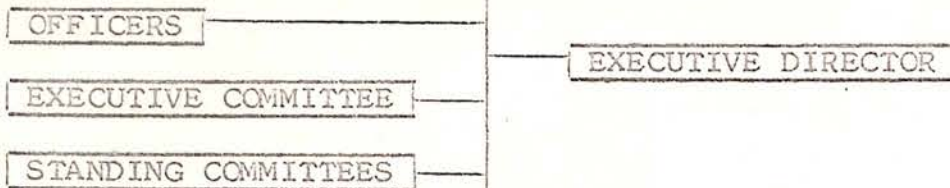


STRUCTURE OF ATLANTA JEWISH WELFARE FEDERATION, INC.

MEMBERSHIP		
<u>INDIVIDUAL MEMBERS</u> All adult contributors to Annual Campaign.	<u>ORGANIZATION MEMBERS</u> Jewish organizations with minimum membership of 50.	<u>CONSTITUENT MEMBERS</u> Composed of local beneficiary agencies.

DELEGATE ASSEMBLY  
Composed of representatives of affiliated organizations and representatives-at-large; acts largely as a forum body.

BOARD OF DIRECTORS - 48 MEMBERS  
Administers and conducts the affairs of the Central Communal Agency.



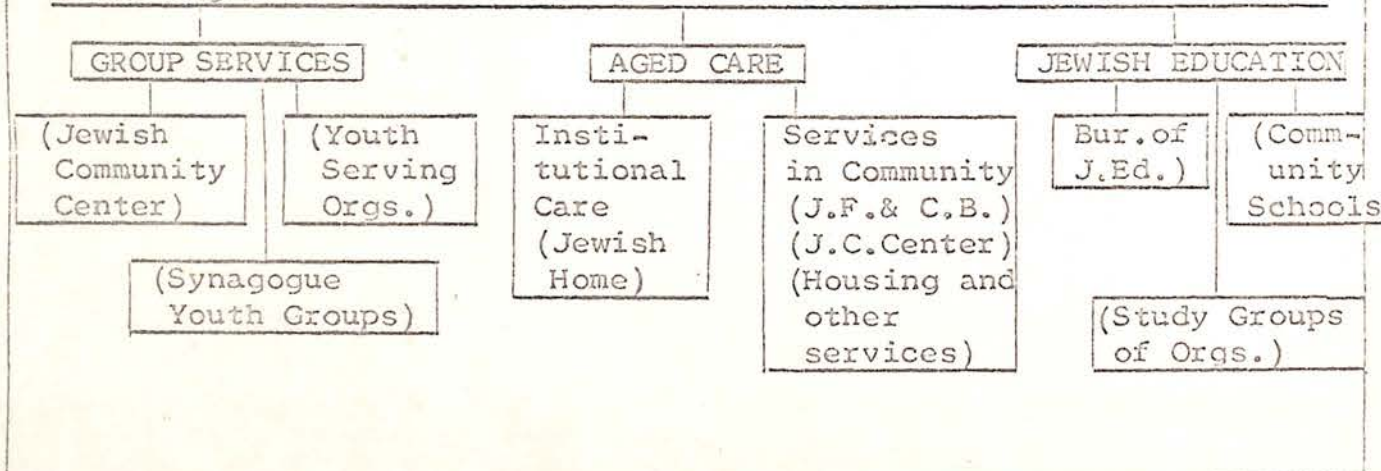
DEPARTMENTS  
A Vice-President and a Vice-Chairman responsible for each Department.

I.  
CAMPAIGNING AND ALLOCATIONS  
Plans and conducts Annual Campaign; collects and disburses funds; clearing house for fund-raising efforts directed at Jewish community

II.  
COMMUNITY RELATIONS AND INTERNAL JEWISH AFFAIRS  
Combats discrimination and promotes ideals of democracy; promotes general welfare of the Jewish Community; conducts Community Calendar

III.  
SOCIAL SERVICE  
Conducts Jewish Family and Children's Bureau agency, Ben Massell Dental Clinic and any social welfare programs assigned to it.

IV.  
COMMUNITY SERVICES AND PLANNING  
Coordinates and promotes inter-agency cooperation; responsible for community-wide planning, fact-finding and social research in following areas:



7/27/67.