

PREFACE

Atlanta's central area will experience a growth rate that only a handful of cities in the world have ever experienced. Employment, travel and other central area activity will double between 1961 and 1983. Only two or three major cities on the North American continent are expected to achieve such growth. Obviously this growth will impose many transportation and development problems.

This Study Design represents the joint effort of the Central Atlanta Business community and the City of Atlanta to help tackle these problems.

Both the Department of Transportation and the Department of Housing and Urban Development are being asked to prescribe those programs most applicable to serve Atlanta's needs.

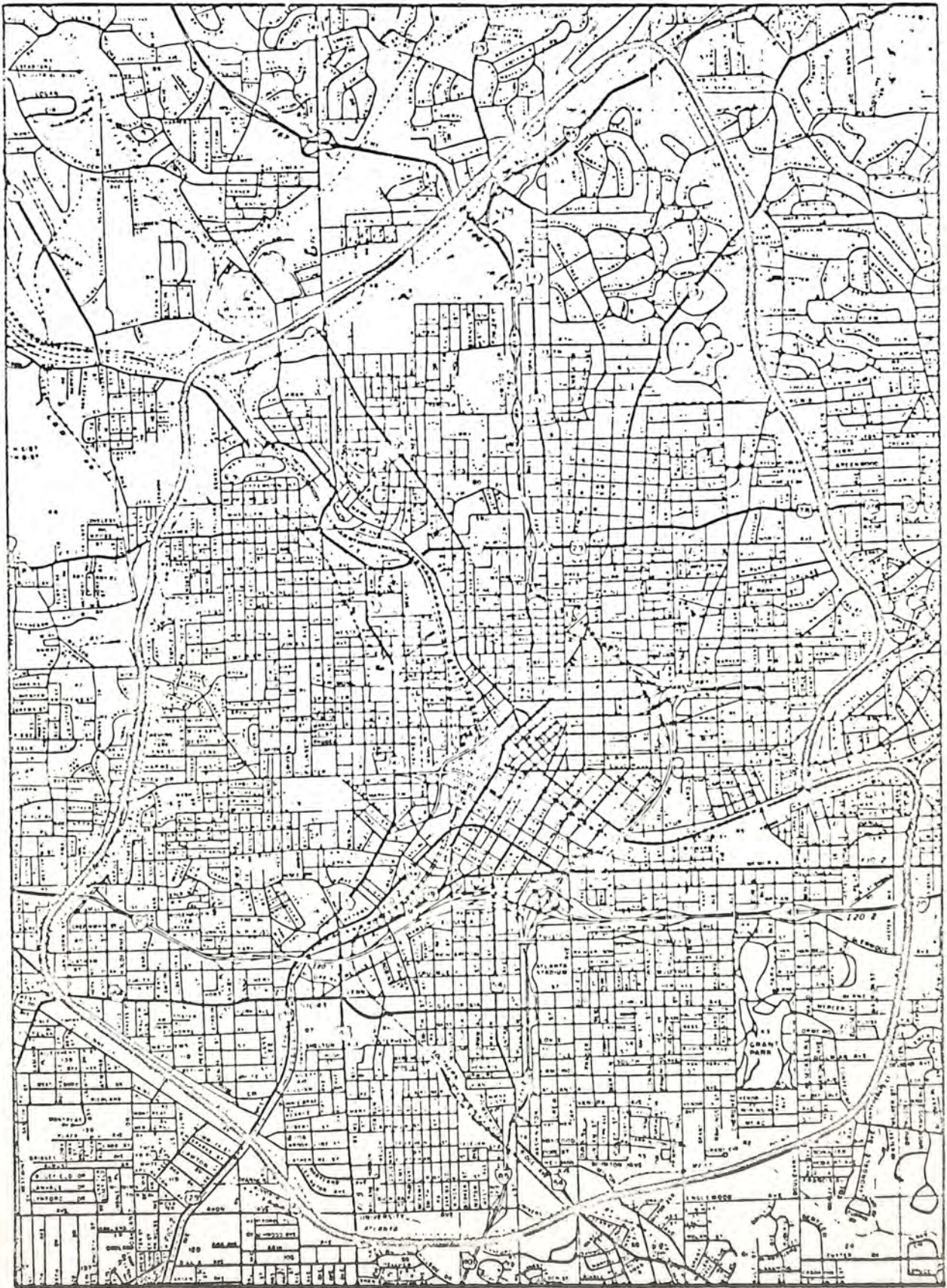


Figure 2.

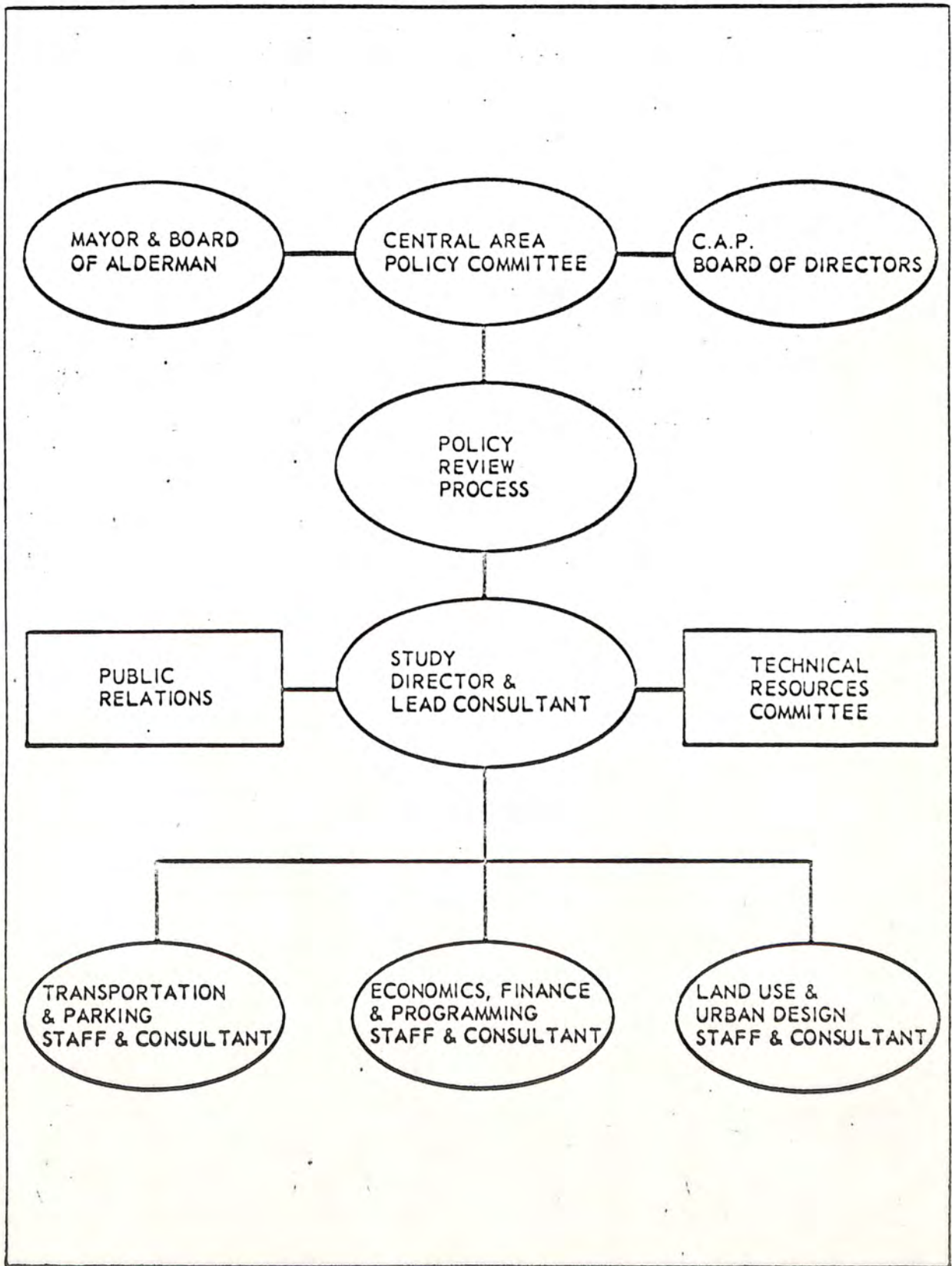


Figure 3.

Section 1

The City and C. A. P. do hereby agree to jointly undertake a Central Atlanta Planning Program substantially in accord with the Outline of the Study Design for the Central Atlanta Planning Process as contained in the attached Exhibit " A " and made a part hereof by reference.

Section 2

That the Work Program for the Central Atlanta Planning Planning Program which is attached as Exhibit "B" and made a part hereof by reference is agreed to as the guide for the accomplishment of the Central Atlanta ~~Plan~~ ^{Planning Program} except that such work program may be altered or changed at any time upon the agreement of both the City and C. A. P.

Section 3

15,000 > city
29,000
25,000 > cap
43,000
i.k.i.

financial

Section 4
city apply to Dept of Trans. for any available

fund