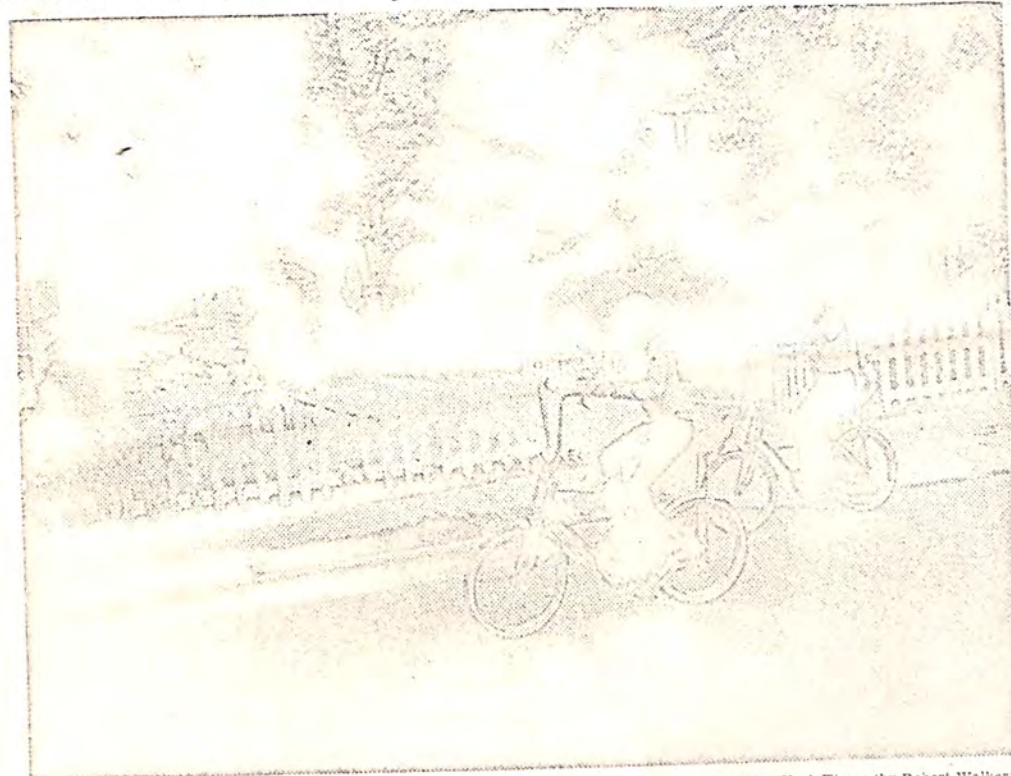
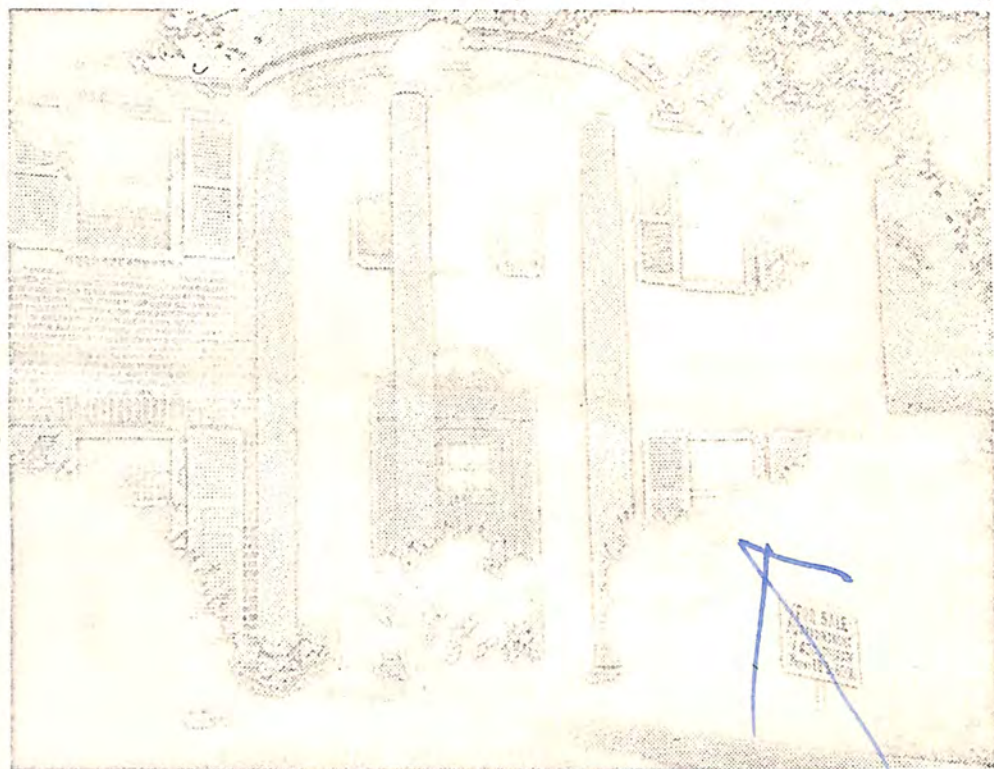


The New York Times

The Integrated Community of Roosevelt, L.I., Repeats a Familiar Story: The Whites Are Moving Out



The New York Times (by Robert Walker)

House for sale on Maple Drive. For Sale signs went up as the school semester ended.

Children on Lincoln Avenue. The parents, said school official, are harder to integrate.

L.I. Community, 60% Negro, Is Striving for Racial Balance

Special to The New York Times

MINEOLA, L. I., June 25 — Arthur Choice, a Negro businessman in the suburban community of Roosevelt, looked at his hands the other day and asked, "What have we got that's contagious?"

He was questioning why another wave of white home owners should withdraw their children from the Roosevelt school system at the end of the school year this week, sell their homes and move from the community in the town of Hempstead to other parts of the island.

view at the Junior and Senior High School.

Mr. Terry, who has been Superintendent for 18 years, said that last year white parents waited until their children had finished the school year to sell their homes and move out.

But this year, a check with the school attendance office showed that withdrawals have averaged three a day since the end of May. Last year, about 150 pupils left the school system of 2,900 students.

This year there is an added

\$40,000