

STRUCTURE OF ATLANTA JEWISH WELFARE FEDERATION, INC.

MEMBERSHIP

INDIVIDUAL MEMBERS
All adult contributors to Annual Campaign.

ORGANIZATION MEMBERS
Jewish organizations with minimum membership of 50.

CONSTITUENT MEMBERS
Composed of local beneficiary agencies.

DELEGATE ASSEMBLY

Composed of representatives of affiliated organizations and representatives-at-large; acts largely as a forum body.

BOARD OF DIRECTORS - 48 MEMBERS

Administers and conducts the affairs of the Central Communal Agency.

OFFICERS

EXECUTIVE COMMITTEE

STANDING COMMITTEES

EXECUTIVE DIRECTOR

DEPARTMENTS

A Vice-President and a Vice-Chairman responsible for each Department.

I.

CAMPAIGNING AND ALLOCATIONS

Plans and conducts Annual Campaign; collects and disburses funds; clearing house for fund-raising efforts directed at Jewish community

II.

COMMUNITY RELATIONS AND INTERNAL JEWISH AFFAIRS

Combats discrimination and promotes ideals of democracy; promotes general welfare of the Jewish Community; conducts Community Calendar

III.

SOCIAL SERVICE

Conducts Jewish Family and Children's Bureau agency, Ben Massell Dental Clinic and any social welfare programs assigned to it.

IV.

COMMUNITY SERVICES AND PLANNING

Coordinates and promotes inter-agency cooperation; responsible for community-wide planning, fact-finding and social research in following areas:

GROUP SERVICES

(Jewish Community Center)

(Youth Serving Orgs.)

(Synagogue Youth Groups)

AGED CARE

Institutional Care (Jewish Home)

Services in Community (J.F. & C.B.) (J.C. Center) (Housing and other services)

JEWISH EDUCATION

Bur. of J. Ed.)

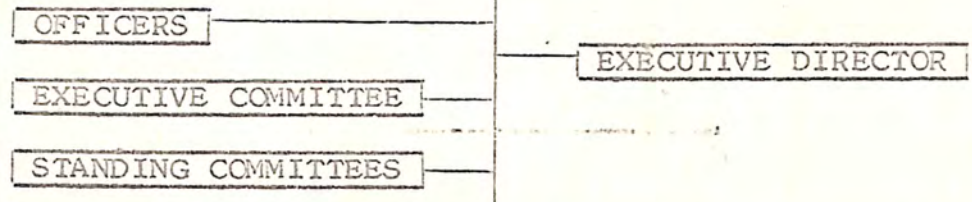
(Community Schools)

(Study Groups of Orgs.)

MEMBERSHIP		
<u>INDIVIDUAL MEMBERS</u> All adult contributors to Annual Campaign.	<u>ORGANIZATION MEMBERS</u> Jewish organizations with minimum membership of 50.	<u>CONSTITUENT MEMBERS</u> Composed of local beneficiary agencies.

DELEGATE ASSEMBLY
Composed of representatives of affiliated organizations and representatives-at-large; acts largely as a forum body.

BOARD OF DIRECTORS - 48 MEMBERS
Administers and conducts the affairs of the Central Communal Agency.



DEPARTMENTS
A Vice-President and a Vice-Chairman responsible for each Department.

I.
CAMPAIGNING AND ALLOCATIONS
Plans and conducts Annual Campaign; collects and disburses funds; clearing house for fund-raising efforts directed at Jewish community

II.
COMMUNITY RELATIONS AND INTERNAL JEWISH AFFAIRS
Combats discrimination and promotes ideals of democracy; promotes general welfare of the Jewish Community; conducts Community Calendar

III.
SOCIAL SERVICE
Conducts Jewish Family and Children's Bureau agency, Ben Massell Dental Clinic and any social welfare programs assigned to it.

IV.
COMMUNITY SERVICES AND PLANNING
Coordinates and promotes inter-agency cooperation; responsible for community-wide planning, fact-finding and social research in following areas:

